



University Centre  
Peterborough

PETERBOROUGH & STAMFORD  
**UNDERGRADUATE  
PROSPECTUS**  
2024-25

# HELLO FUTURE



# WELCOME TO



**Our mission at University Centre Peterborough is to engage, enable and empower students to meet the challenges of the future.**

This guide should cover what you need to know before you apply, but it won't cover everything about university. We know that sometimes you would love to speak to a helpful member of the team.

Whether you want to know more about your accommodation, student finance, finding your way around, or you want to meet the lecturers and ask about your course, come to an Open Event or book a campus tour to get your questions answered!

Our website is packed with useful information including interactive 360° tours of our amazing facilities. You can also visit our website to Live Chat with our friendly team.



# UNIVERSITY CENTRE PETERBOROUGH

# KEEP IN TOUCH



Follow our socials to keep up with everything going on at UCP. Have a question for us? Give us a call, send us an email or visit our website to Live Chat with our friendly team.



## Open Events

Our Open Events are a great way to get a snapshot of what university life is like here at UCP and provide you with all the information you need to help you make the right decision for your future.

On the day you will be able to have a look around and speak to staff about applications and courses. We will have various displays and demonstrations for our courses and current students will also be on hand to tell you about studying at UCP.

In addition to our course advice we will also have financial talks, information on our clubs, societies and student accommodation.

Register your place at [www.ucp.ac.uk](http://www.ucp.ac.uk).

## Explore Our Campus Any Time!

Can't make it to an Open Event or missed something you wanted to see? Contact us to book a tour any time Monday to Friday, or check out our virtual tour at any time on our website. Visit [www.ucp.ac.uk](http://www.ucp.ac.uk) to explore our amazing facilities.



## Open Events 2023/24



|                     |                     |                     |                     |
|---------------------|---------------------|---------------------|---------------------|
| <b>12</b><br>OCT 23 | <b>14</b><br>NOV 23 | <b>23</b><br>MAR 24 | <b>27</b><br>JUN 24 |
|---------------------|---------------------|---------------------|---------------------|



# CONTENTS

## INFORMATION

|   |    |
|---|----|
| Your Future Starts Here .....                     | 8  |
| We Are Inspire Education Group.....               | 10 |
| Say Hello To A Brighter Future.....               | 12 |
| Where Being Smaller Really Counts.....            | 14 |
| We Get To Know You As<br>Individuals.....         | 16 |
| Timetables That Fit Around You .....              | 18 |
| We Are Here To Support You.....                   | 20 |
| Mature Students Are Not Alone.....                | 22 |
| We Believe In Giving Our<br>Students A Voice..... | 24 |
| Your Campus and Student<br>Activities .....       | 26 |
| Student Housing and Flats .....                   | 28 |
| Getting Here is Easy .....                        | 30 |
| Discover Our Vibrant City .....                   | 32 |
| Our Students' Success.....                        | 34 |
| Our Course List .....                             | 39 |
| How to Apply.....                                 | 58 |
| Entry Requirements.....                           | 60 |
| Fees and Funding .....                            | 62 |
| Keep in Touch .....                               | 66 |

## COURSES

|   |    |
|---|----|
| <b>Business &amp; Professional<br/>Courses</b> .....                  | 40 |
| Foundation Degree in Business<br>Management .....                     | 40 |
| BSc (Hons) Business Management .....                                  | 40 |
| BSc (Hons) Business Management<br>(Human Resources) .....             | 40 |
| BSc (Hons) Business Management<br>(Marketing) .....                   | 40 |
| BSc (Hons) Business Management<br>(Management Accounting) .....       | 41 |
| Foundation Degree in Digital<br>Marketing and Communications.....     | 41 |
| BA (Hons) Digital Marketing and<br>Communications.....                | 41 |
| <b>Social Science Courses</b> .....                                   | 42 |
| BA (Hons) Criminology.....  | 42 |
| BA (Hons) English Literature.....                                     | 42 |
| BA (Hons) English Literature<br>(Creative Writing) .....              | 42 |
| BA (Hons) History and Archaeology.....                                | 43 |
| BA (Hons) Psychosocial Studies.....                                   | 43 |
| BA (Hons) Sociology .....   | 43 |
| Diploma in Therapeutic Counselling.....                               | 44 |
| BA (Hons) Therapeutic Counselling<br>and Psychotherapy (Top-Up) ..... | 44 |

|  |    |
|--|----|
| <b>Creative Industries Courses</b> .....   | 46 |
| BA (Hons) Media Production .....   | 46 |
| BA (Hons) Acting for Stage<br>and Screen.....  | 46 |
| BA (Hons) Digital Arts .....   | 46 |
| BA (Hons) Digital Arts<br>(Graphic Design) .....   | 46 |
| BA (Hons) Digital Arts<br>(Photography) .....  | 47 |
| BA (Hons) Journalism.....  | 47 |
| <b>Education &amp; Teaching Courses</b> .....  | 48 |
| Foundation Degree in Early<br>Childhood Studies.....                                     | 48 |
| Foundation Degree in Primary<br>Education .....  | 48 |
| BA (Hons) Education Studies<br>(Top-Up) .....  | 48 |
| BA (Hons) Primary Education<br>(Top-Up) .....  | 49 |
| BA (Hons) Early Childhood Studies<br>(Top-Up) .....                                      | 49 |
| Professional Graduate Diploma/<br>Certificate in Education, Training<br>and Skills ..... | 49 |
| <b>Science &amp; Technology Courses</b> .....  | 50 |
| HND Animal Management<br>(Animal Behaviour and Welfare) .....                            | 50 |
| BSc (Hons) Animal Management<br>and Welfare (Top-Up) .....                               | 50 |
| BSc (Hons) Biological Sciences .....   | 50 |
| Diploma in Web Application<br>Development .....  | 50 |
| Foundation Degree in<br>Computer Science.....  | 51 |

|   |    |
|---|----|
| BSc (Hons) Computer Science.....                                    | 51 |
| BSc (Hons) Computer Science<br>(Software Development).....          | 51 |
| BSc (Hons) Computer Science<br>(Networking).....                    | 51 |
| BSc (Hons) Computer Science<br>(Cyber Security) .....               | 52 |
| HNC Construction (Construction<br>Management).....                  | 52 |
| HNC Engineering (Electrical<br>and Electronic).....                 | 52 |
| HNC Engineering (Mechanical) .....                                  | 52 |
| HND Engineering<br>(Electrical/Mechanical) .....                    | 53 |
| Foundation Degree in Forensic<br>Investigation.....                 | 53 |
| BSc (Hons) Forensic Investigation.....                              | 53 |
| BSc (Hons) Sport and Exercise<br>Science .....                      | 54 |
| Foundation Degree in Sport<br>and Exercise Science (Coaching) ..... | 54 |
| BSc (Hons) Sport and Exercise<br>Science (Coaching) .....           | 54 |
| <b>Partner Courses</b> .....  | 56 |
| HNC/HND Performing Arts (Musical<br>Theatre).....                   | 56 |
| <b>Access to Higher Education</b> .....                             | 57 |
| <b>HTQ Courses</b> .....  | 57 |

# YOUR FUTURE STARTS HERE



When you study at University Centre Peterborough, we will support your development and help you achieve your career ambitions. We have excellent working relationships with local companies looking to recruit our graduates directly from us or improve qualifications for their existing staff.

As a relatively new institution, we have been able to create a learning environment which is different to other universities, and our strength comes from our smaller size, enabling us to put you at the heart of everything we do.

Significantly this includes smaller class sizes and more contact time with your lecturers, including; 1:1 tutorials, convenient timetabling and flexible study options to fit in with our students' lives. We do this by listening to your feedback and enhancing our offer and support.

Our student satisfaction National Student Survey (NSS) results are consistently above national benchmarks with overall satisfaction at 86% and student voice 13% above benchmark.

We will support you in identifying opportunities for internships, work placements or volunteering to improve your career prospects which can lead to permanent work after graduating. Our award-winning student publication 'Inside the Box' has been invaluable for those progressing into careers in journalism, media and marketing.

Please look at our website to find out more about our Alumni successes and the support you can gain from our Employability Hub both during and after your course. We also offer bursaries for care leavers and those from low income backgrounds as we are keen to remove barriers.

Since opening our purpose built £10 million campus in 2009 in the heart of Peterborough, we have grown our portfolio of courses to reflect the needs of local, national and international employers and these lead to genuine employment opportunities for our graduates in their chosen career path. Our campus in Stamford delivers provision ranging from Animal Management to Counselling. In 2020 we became part of the Inspire Education Group and subsequently have grown our HE provisions and are proud to have the highly acclaimed Eastern School of Performing Arts (ESPA) as our partner.

In July 2021, we became an approved partner institution of The Open University so your degree has both national and international recognition. The relevant course page will identify the awarding body of the course you are studying. UCP has a civic mission to develop the community and enhance the civic life of the region. Enhancing democratic and civic participation also builds the confidence of our students, creates networks and enhances your employability. Our Malcolm Bradbury Trust Scholarship bursary is a further example of how we support students to engage with the creative community.

A number of research projects undertaken by our staff and students have also led to knowledge exchange, which promotes public good and, in turn, promotes great democratic and civic participation. We look forward to working with you, so please do come and discover what we have to offer and be assured students remain at the heart of all that we do.

**Liz Knight**  
*Academic Director*  
University Centre Peterborough



# WE ARE INSPIRE EDUCATION GROUP



“The IEG mission is to transform lives through inspirational education and training.”

**Peterborough and Stamford, thriving together.**

Inspire Education Group (IEG) is a successful provider of further and higher education combining Peterborough College, Stamford College and University Centre Peterborough.

We seek to transform the lives of our students and trainees, preparing each for their next step, whatever that might be. We support employers to develop their people and their organisations. We strive to make a positive contribution to the prosperity and wellbeing of our diverse communities.

We will continue to create and nurture long-term, strategic partnerships that support us in responding to the needs of our different communities, contributing to the social and economic prosperity, growth and aspiration of our locales, and building the resilience of our Group.

People are at the heart of our Group, whether that is our students and trainees, our partners in industry and local services, or our staff who deliver outstanding education and training and shape our culture, ethos and values.

The Group meets challenges and opportunities with ambition, energy, optimism, and an absolute focus on excellence.

 **Inspire**  
Education Group

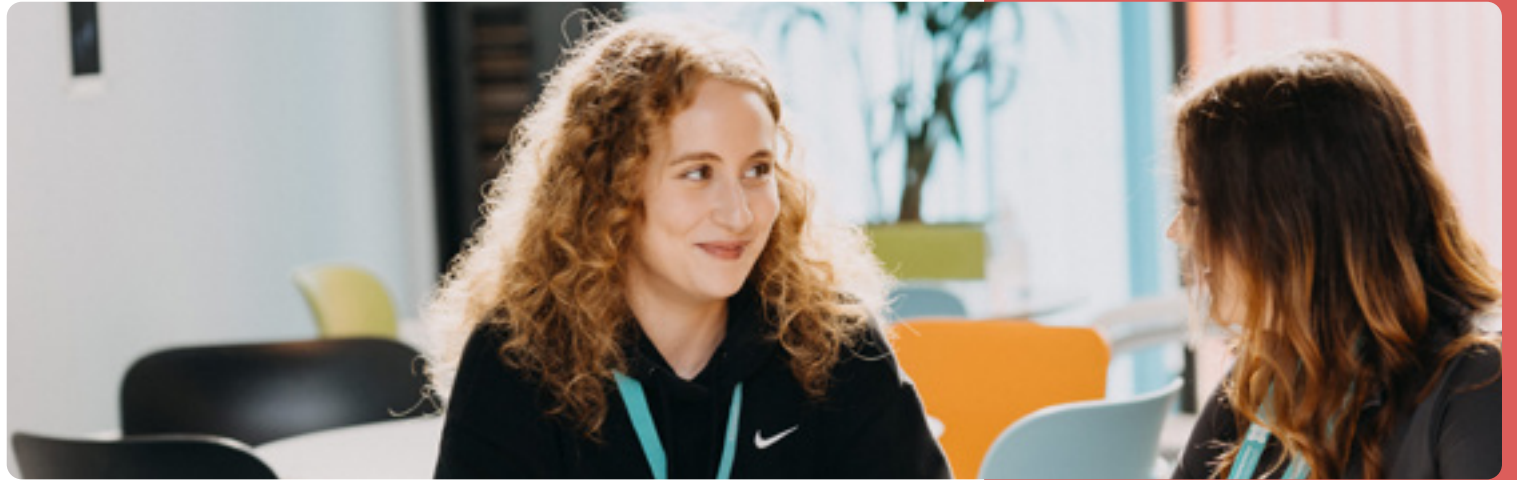
 **Peterborough**  
College

 **Stamford**  
College

 **University Centre**  
**Peterborough**

# SAY HELLO TO A BRIGHTER FUTURE

**For many people, getting a degree is the start of their journey, not the end. We will help you progress within your chosen career.**



## A Fast Growing City

Peterborough is one of the fastest growing cities in the UK, particularly due to excellent road and rail links. There is a thriving hub of businesses which includes head offices for some of the UK's top companies. With this growth, there is demand from companies for graduates, which gives University Centre Peterborough graduates a head start in gaining employment in their chosen career.

## Hello Future

Our degrees have been designed in consultation with local employers to ensure our graduates are career ready as we realise how important new graduates are for local employers. Visit our website to explore the different careers and jobs available for graduates to help you choose which course is most suitable for you.

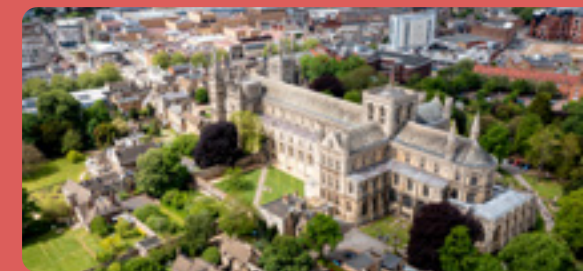
## Improving Employability

We have an Employability Hub to enhance your professional and transferable skills. We work with students and employers to develop graduate outcomes and maximise the employability of our students. There are numerous employability and volunteering opportunities each year, supported by local and national employers.

## Work Placements and Work Experience

Employability plays an important part in the course that you study, and we will help you identify work placements, internships and volunteering opportunities. As our lecturers have links with industry, they can let you know about the opportunities available even after you have finished studying with us and become part of our Alumni.

Some courses include work placements as core modules which are assessed and may lead to employment after you graduate. As courses are timetabled as full days during the week when studied full-time, this gives you the flexibility to find part-time work or a work placement, internship or volunteering opportunity.





# WHERE BEING SMALLER



# REALLY COUNTS

We believe that **size really matters** when it comes to choosing a university, as there are many benefits to studying somewhere smaller.

## Benefit From Our Small Class Sizes

The courses at University Centre Peterborough are studied in small class sizes compared with other universities; a typical class size is under 30 students.

During our lectures and seminars, students can engage and interact with academic staff so all students understand the course content and build knowledge. There are opportunities to discuss and answer questions without any pressure. Compared to larger universities who may have lectures with over 100 students, the learning environment can be very different.

There are some courses where smaller classes are even more beneficial as you may need to be hands-on with recording equipment, require individual help in the science lab, use specialist technology to test sports performance or star in a drama production.

## It's Easy To Settle In

You won't get nervous finding your way around campus and you certainly won't get lost finding where your next seminar is. Our modern campus makes it easy to settle in and we ensure new students see all of the facilities during their induction and enrolment week. If you want to see the campus beforehand, book a personalised tour or come to one of our Open Events.

## Make New Friends Straight Away

In small classes, you will quickly get to know your peers and group activities will give you opportunities to work together. As our courses are based on small campuses you will also get to know students on other courses.

## Access to Support When You Need It

By the nature of us being a smaller institution, you can be reassured that our support team and your lecturers can give you the support you require. Our inclusive environment means that we use teaching, learning and assessment methods that suit all learners. You will find it helpful that you are dealing with familiar staff throughout the duration of your studies, and they will take the time to get to know you and understand your needs.

## You Will Get Noticed

All students have an equal chance to stand out from the crowd and have their potential noticed. As our lecturing staff get to know you, they will let you know of work placement and employment opportunities that are most suitable for you.



# WE GET TO KNOW YOU

We provide  
a warm and  
welcoming  
environment,  
where all of  
the academics,  
support staff  
and senior  
management  
get to know you  
as individuals.



## Your Future Really Matters To Us

Our academic staff will know your name, what you are interested in, how well you are doing, whether you need extra support and what your future plans are so they can help you succeed. This support continues after you have graduated as we will continue to support you as a member of our Alumni.

## One-to-One and Group Tutorials

We timetable weekly individual and group tutorials so you can discuss previous lectures and seminars, plan for coursework and assessments and talk through any help you require to get the most out of your course. This also gives you the opportunity to receive feedback on coursework and assessments so you are constantly able to improve.

Small class sizes also mean that in the event you are unable to attend a lecture, we will ensure you are not missing out on important course content.

## Learn from Quality, Experienced and Well-Connected Staff

Many of our lecturing staff have worked in the industry they lecture in and bring their knowledge and understanding of best practice to lectures and seminars. Through their industry connections, they will help you gain work placements or opportunities in local and national businesses.

We are committed to the personal and professional development of our academic staff, so you are taught by leading academics with recognised qualifications.

# AS INDIVIDUALS

# TIMETABLES THAT FIT AROUND YOU



Your time is very valuable, which is why we help you make the most of it, so you can fit your course around personal or work commitments.



“I would never have been able to fit in my work placement and gain experience if the course wasn’t timetabled as full days. This experience was so invaluable in helping me get my first job in my chosen career.”

## The Majority of our Courses are Two Days Per Week

When studied full-time, the majority of courses at University Centre Peterborough have lectures timetabled as two full days a week over two semesters per year. Part-time courses have one to two full days a week over two semesters per year. The days of the week you study may change each year.

We are able to offer this convenient timetabling to our students as we are a smaller institution so we can timetable our staff and resources more efficiently. There are some exceptions where full-time courses are one or up to three days a week, and you can find the specific details on our website.

## Planning Your Other Days of the Week

This convenient timetabling enables you to better plan your time for independent study and fit the course around personal or work commitments. It can help you to gain part-time work to fund your time at university or work placements and volunteering opportunities to enhance your employability after you graduate.

## The Academic Year

There are two semesters per year and each semester is up to 15 weeks which includes up to 12 teaching weeks and 3 assessment weeks.

If studying full-time you will be in classes, seminars and tutorials for approximately 15 hours per week and you will spend the rest of your time in independent study and extra-curricular activities including work placement if not embedded in your course. We recommend that full-time students allow 30 hours per week for additional study.

The campus is open Monday to Friday throughout the year and you will also have 24/7 access to a Virtual Learning Environment (VLE) with e-books, journals and abstracts plus teaching resources and interactive tools.

Timetables are available at least 6 weeks before registration and you can refer to the academic calendar at [www.ucp.ac.uk](http://www.ucp.ac.uk) for examination weeks and resit periods.

# WE ARE HERE TO SUPPORT YOU

**You might not need any support during your time studying with us, but if you do need to speak to someone, it is reassuring to know there is someone available and willing to help.**



## Student Support

Our Student Support team are not just there to help our current students, but can help you even before you apply to us as we understand that preparation is just as important.

If you have something you don't feel comfortable speaking to a member of staff about, you can speak to our Student Officer who is there to bridge the gap between students and staff. The Student Support team can help deal with all enquiries relating to:

- Funding and fees for UK and EU students
- Grants and allowances
- Student accommodation
- Mental health and wellbeing
- Emotional support
- Course extensions and mitigations
- Arrangements for learning support

## Study Excellence Sessions

During lunchtimes, there are drop-in Study Excellence sessions which focus on academic, transferable and professional skills such as Harvard referencing, preparing for seminars, and IT help using Excel and PowerPoint. We also offer English writing and speaking support sessions for students where English is an additional language (EAL).

## Employability Hub

Our Employability Hub is designed to enhance your professional and transferable skills, plus we will help students with employability and placement opportunities as we work closely with employers.

## Disabled Students

Our facilities are designed to be fully accessible for disabled students. We provide additional support by purchasing specialist equipment, staffing help or extra time for exams. We will require you to undertake an assessment so we can tailor support to your needs.

## Chaplaincy

A chaplaincy service is available to you irrespective of your faith or commitment. Here you can discuss spiritual or personal issues in confidence. They host weekly free coffee mornings where you are welcome to have a friendly chat.

**“I took advantage of the free Study Excellence sessions in my first year, which helped me quickly adapt to studying at degree level.”**



# MATURE STUDENTS



# ARE NOT ALONE

The student community at University Centre Peterborough is a **diverse and friendly** one.

## Starting University as a Mature Student

You will not feel alone as all courses have a mix of different ages with at least one in three undergraduates being a mature student so you get the chance to meet people with similar interests and experiences. You will find that you bring interesting and alternative perspectives into lectures, and these will be respected and valued. We are committed to helping you develop your academic skills so you can balance your studies with family or work commitments.

## Funding Your Studies

Mature students are just as entitled to apply for tuition fee and maintenance fee loans and you may be entitled to bursary schemes. In certain circumstances you may be able to get additional loans / grants to help towards your living costs or childcare. We will help you on an individual basis to ensure you receive what you are entitled to. See page 62 for further information.

## Part-Time Study

Many of our courses offer the option to study part-time so you can fit studies around family or work commitments. However, due to the way we timetable lectures for the majority of courses into two full days, you may find that studying full-time is just as convenient. A part-time degree typically takes 4 years to complete with us, as opposed to 6 years at other universities. Note that applications for part-time courses can be made directly to University Centre Peterborough and you do not need to apply through UCAS.

## Access to HE

If you have been out of education for a while and do not want to start a degree straight away, you might want to consider an Access to Higher Education qualification, which can prepare you for university study. Mature students who study Access to HE beforehand can be better prepared to manage the workload of a degree (see page 57 for further information). A Foundation/Year 0 course at a university would typically cost £9250, whereas an Access to HE course would cost just £3000. What's more, if you pay using an Advanced Learner Loan, you may not have to pay it back if you go on to complete a HE degree.

## Childcare Facilities

There is a nursery on our Peterborough campus, which offers high quality childcare for babies and young children aged 3 months to 5 years old. Early booking is advised as there are limited spaces. For more information, please contact The College Nursery on 01733 762180 or email [nursery.pbo@ieg.ac.uk](mailto:nursery.pbo@ieg.ac.uk).



# WE BELIEVE IN GIVING OUR STUDENTS A VOICE

**We listen to what you have to say and act on your feedback and comments. Our students play an important role in the success of University Centre Peterborough.**



## Student Council

Instead of a Students' Union, University Centre Peterborough has its own Student Council. This is managed by our Student Officer and is completely independent from UCP so can act impartially on behalf of the students. The Student Council meet once a month and topics vary from teaching, facilities and general feelings about student life.

This provides an opportunity for engagement and participation, where the student voice can be heard and actively promoted.

## Student Reps

University Centre Peterborough has many Student Representatives who sit on academic committees and who provide feedback on behalf of other students on their course.

## Student Charter

The Student Charter was produced with our students and worded to be 'student friendly'. It outlines the rules and regulations as well as the rights students have with us. Quality and standards are covered within the Student Charter, which outlines what students can expect from UCP and what UCP expects of its students. The Student Charter has enabled students to participate at a high level, not only because students wrote it, but it is also a policy that is owned and updated by our students.

## Student Ambassadors

If you are an undergraduate student, you could receive a tax-free bursary of up to £1,000 by becoming a Student Ambassador for University Centre Peterborough.

The benefits of becoming an Ambassador include; increasing employability when you graduate, developing personal and presentation skills and inspiring prospective students to go to university.

## Student Officer

Our Student Officer chairs the Student Council, is a member of the UCP Council (our governing body) and is involved with UCP meetings. As a board member, the Student Officer provides a voice for the student body and can influence decisions that are made.

University Centre Peterborough takes the student voice very seriously and encourages a partnership ethos between institution and student. The role of the Student Officer is to act as a link and mediator between students and staff.

# YOUR CAMPUS

## Study at Our Modern Campuses

For the majority of our undergraduate courses, all lectures and seminars will take place at the Peterborough or Stamford campuses, which are open Monday to Friday throughout the year.

Our modern campuses include the following features:

- 96 seater lecture theatre\*
- Fully-equipped classrooms
- Costa or Starbucks café
- Large social atrium or common room
- Computer / digital suites
- Quiet study zones
- Open plan / group study areas
- Student Support Centre

Students will have access to the library, gym, beauty salon, nursery\* and additional catering outlets at adjoining Peterborough and Stamford Colleges.

Some courses at our Peterborough campus have practical elements so will use the specialist facilities such as gym and sports labs, science laboratories and engineering / construction areas at adjoining Peterborough College. Our Media Production and Journalism courses use specialist facilities at the Media and Journalism Centre in Peterborough City Centre and our Performing Arts courses use the rehearsal facilities at The Key Theatre or our various partners.

\*Located at the Peterborough campus only.

## Student Events

Each semester there is plenty to do, with lots of events that are available for all students. This is where you can socialise and get to know fellow students on other courses.

Just some of our student events include:

- Freshers' welcome week
- Quiz nights
- Film screenings
- Charity and fundraising events
- Family fun activities
- Employability events
- Volunteering events
- Student Awards evening
- Graduation ceremony

We also work with many venues and attractions across Peterborough and Stamford to arrange special events for courses and social groups.

## Clubs, Societies and Teams

There are a variety of sports teams, clubs and societies on offer at University Centre Peterborough who regularly meet to take part in activities throughout the year, such as the Creative Writing Society and the Crime and Justice Society. If there is not a club or sports team for you, then you can start your own! You just need a minimum of 10 students and we will support you by providing funding.



# AND STUDENT ACTIVITIES

**Our campuses are located in the heart of Peterborough and Stamford, and just a short walk into the city or town centres.**



# STUDENT HOUSING AND FLATS



**For many, university life starts in student accommodation. It is convenient, cost effective and a great way to meet and make new friends. Perfect for getting your head down!**

## University Court

The student accommodation at University Court in Peterborough is located within walking distance to our Park Crescent campus and close to the city centre. The train station in the city centre also makes it convenient for our courses in Stamford.

The accommodation is available for first year students and can be booked by second and third year students (subject to availability).

- Five bedrooms in each flat
- En-suite in every bedroom
- Free Wi-Fi
- Free laundry facilities
- 24 hour CCTV and gated entrance
- Secure cycle store
- Car parking available
- Single sex flats available

Each five bedroom flat has a communal kitchen / lounge with sofas and is fully equipped with breakfast bar, range of kitchen units and appliances (including cooker, fridge, freezer and microwave) making it a great space for relaxing with your housemates.

All of the private bedrooms include a double bed and study area with desk, storage and shelving. Every bedroom has its own private en-suite shower room so you do not have to share bathrooms. There is also a common room and laundry room serving the entire complex.

## Safe and Secure

The accommodation offers a safe environment for students to enjoy university life. Access to the accommodation is via an electronic gate which leads into well-lit, secure landscaped grounds with CCTV and 24 hour emergency call-out. A secure cycle store is provided and limited car parking is available.

## Costs and Virtual Tours

Rooms can be rented from £525 per month (price correct for 2023/24) which is fully inclusive of utility bills and Wi-Fi. Each tenancy will be subject to a £250 deposit, payable on commencement of lease. University Court is managed independently from University Centre Peterborough - for further information including a virtual tour please visit: [www.tavernershall.co.uk](http://www.tavernershall.co.uk).

## Other Student Accommodation

University Centre Peterborough can help with arrangements and queries for accommodation at University Court or other private rented accommodation in Peterborough. For further information or queries please email [accommodation@ucp.ac.uk](mailto:accommodation@ucp.ac.uk).



# GETTING HERE

Peterborough and Stamford are located in the heart of the UK and benefit from excellent road and rail links.

## Commuting to UCP

Whilst many new students move into our student accommodation in Peterborough, a third of the students who study at University Centre Peterborough commute from up to 40 miles away. As the majority of courses are timetabled as two full days a week, it can be just as easy to commute from home.

## Walking

Our campuses are close to the city and town centres and a short walk from the main bus and train stations.

## Car

If you plan to bring your car, you can apply for a free car parking permit if you live more than two miles away. Spaces are limited and available on a first come, first served basis. When using a satnav to the Peterborough campus, use postcode PE1 4DX (not PE1 4DZ) which will bring you to the Park Crescent entrance.

## Cycling

Our central locations in the heart of Peterborough and Stamford mean that students can use the network of cycle routes, providing a quick, safe and easy way to get around. There are also plenty of cycle racks available on campus.

## Bus

The bus stations in Peterborough and Stamford are a short walk to our main campuses. For buses which stop directly at our campuses, students can use the Peterborough College or Stamford College bus routes for an additional cost per year. These pick up from many of the towns and villages within a 20 mile radius. For the full list and pick up / drop off times please visit: [www.peterborough.ac.uk](http://www.peterborough.ac.uk) or [www.stamford.ac.uk](http://www.stamford.ac.uk).

## Train

Peterborough is a major interchange train station and has direct links from the north and south with London from 45 minutes and Newcastle from 2 hours 20 minutes away. Peterborough to Stamford by train is under 15 minutes and trains depart at least every hour.

### Under 1 hour to Peterborough by train from....

|                            |         |
|----------------------------|---------|
| Whittlesey .....           | 10 mins |
| Stamford .....             | 15 mins |
| Huntingdon .....           | 15 mins |
| Grantham .....             | 20 mins |
| March .....                | 20 mins |
| St Neots .....             | 25 mins |
| Spalding .....             | 25 mins |
| Stevenage .....            | 30 mins |
| Newark .....               | 30 mins |
| Oakham .....               | 30 mins |
| Sandy .....                | 30 mins |
| Ely .....                  | 35 mins |
| London (Kings Cross) ..... | 45 mins |
| Cambridge .....            | 55 mins |
| Leicester .....            | 55 mins |
| Doncaster .....            | 55 mins |



# IS EASY



# DISCOVER OUR VIBRANT CITY

The diverse and picturesque areas of Peterborough and Stamford have plenty to do and see for students of all ages and interests. Check out our guide to what's on!



## Exploring Stamford and Peterborough

Use this guide to help you explore just some of what our diverse and picturesque areas offer. If you have not been to Peterborough or Stamford before, we hope this helps you find something to do and enjoy. For the latest information on events, attractions and news of what is going on in the local area check out:

[www.peterboroughmatters.co.uk](http://www.peterboroughmatters.co.uk)  
[www.espmag.co.uk](http://www.espmag.co.uk)  
[www.themomentmagazine.com](http://www.themomentmagazine.com)  
[www.welovepeterborough.co.uk](http://www.welovepeterborough.co.uk)

## History and Heritage

Peterborough is steeped in heritage from the 900 year old Peterborough Cathedral to Bronze Age settlements at Flag Fen. Burghley House near Stamford hosts many annual events and Peterborough Museum has over 200,000 items.

## Culture and Entertainment

Stand-up comedy, live theatre, musicals, dance, West End screenings, pantomime, tribute bands, live music and club nights - we've got pretty much everything covered.

Top acts and national tours choose the big venues in Peterborough and Stamford as their preferred destination. For upcoming dates, check out:

[www.keytheatre.org.uk](http://www.keytheatre.org.uk)  
[www.stamfordcornexchange.co.uk](http://www.stamfordcornexchange.co.uk)  
[www.cresset.co.uk](http://www.cresset.co.uk)  
[www.newtheatre-peterborough.com](http://www.newtheatre-peterborough.com)

## Festivals

There are festivals taking place throughout the year that celebrate everything from heritage, religion, nationality, beer and even sausages! Check out:

[www.fakefestivals.co.uk](http://www.fakefestivals.co.uk)  
[www.pboroberfest.camra.org.uk](http://www.pboroberfest.camra.org.uk)  
[www.peterboroughdiwali.org](http://www.peterboroughdiwali.org)  
[www.peterboroughmuseum.org.uk](http://www.peterboroughmuseum.org.uk)  
[www.simfestival.com](http://www.simfestival.com)

## Shopping

As well as the main shopping centres, you will be spoilt for choice with even more shopping outlets and markets. There are high street chains including Primark, M&S, River Island, Next and H&M plus plenty of boutique and artisan shops.

## Student Activities

Stuck for something different to do? There is always plenty of choice plus special offers and discounts for students. Try:

[www.showcasecinemas.co.uk](http://www.showcasecinemas.co.uk)  
[www.hollywoodbowl.co.uk/peterborough](http://www.hollywoodbowl.co.uk/peterborough)  
[www.inflatation.com](http://www.inflatation.com)  
[www.escape-peterborough.co.uk](http://www.escape-peterborough.co.uk)

## Food and Drink

If you're a real foodie, then Peterborough and Stamford are the perfect places to set your taste buds alive! Stretching to all corners of the globe there is an array of exotic cuisines as well as high street chains. Check out:

[www.charters-bar.com](http://www.charters-bar.com)  
[www.tapandtandoor.co.uk](http://www.tapandtandoor.co.uk)  
[www.thebrewery-tap.com](http://www.thebrewery-tap.com)  
[www.kneadpubs.co.uk/paten-co](http://www.kneadpubs.co.uk/paten-co)  
[www.cosyclub.co.uk/location/stamford](http://www.cosyclub.co.uk/location/stamford)  
[www.blondebeet.co.uk](http://www.blondebeet.co.uk)

## Sport - Watch or Join In!

Peterborough is home to Peterborough United FC, also known as 'The Posh'. For a great student night out we recommend you visit the ice hockey or speedway for fast and thrilling sports that are competing at the top level. Whatever sport you want to do there will be the facilities or a club to do it. There are plenty of gyms and swimming pools plus sports clubs for rowing, tennis, squash, martial arts, hockey, cricket, rugby and football.

## Green Spaces

You are never far away from outdoor spaces with Nene Park, Ferry Meadows or Burghley Park offering stunning lakes, meadows and woodland. Our Peterborough campus is next to Central Park which is one of the most prestigious parks in the city. The Green Wheel is a 45 mile long cycle route circling Peterborough and offering a healthy way to enjoy the picturesque countryside.

## 45 Minutes to London!

Whilst Peterborough and Stamford have everything on offer you will need, the rest of the UK is easily accessible and you can get to Kings Cross London by train from Peterborough in just 45 minutes.

# OUR STUDENTS' SUCCESS



**At University Centre Peterborough, we believe in celebrating the success of all our students. Each year we always have a lot to celebrate as our students are amazing!**

## Enhancing Your Experience

We are privileged to hold our graduation ceremony in Peterborough Cathedral and immensely proud that 80% of our graduates achieve a first class honours or 2:1 degree classification. After graduating, it is rewarding to see the careers our students go on to as well as students who choose to continue their academic journey by studying a variety of postgraduate courses.

Past students have gone on to study masters in engineering at Oxford and PGCE qualifications to pursue their teaching careers in local schools.

Our Sociology and Psychosocial Studies students have been involved with research projects that have featured on BBC Look East and Anglia News as they covered current affair topics. This included research into Universal Credit for Peterborough Citizens Advice and a community integration project for Peterborough City Council.

Our Journalism students have secured roles with BBC Cambridgeshire thanks to events organised by the BBC and UCP who are working closely together on exciting projects for the Peterborough area.

In 2019 UCP was awarded the Office for Students (OfS) Challenge Fund and its legacy has enhanced our support for students.

Our employers play a key part of our culture and are involved in the conferences for Computing, Engineering and Sport, which showcase the groundbreaking work from our final year students.

Our Early Years and Education students in Peterborough and Stamford continue to play a valuable role as key workers in schools which are rapidly growing in the area.

To promote literature in the region, we run a series of popular Literary Festival events which are free for members of the public to attend. Previous speakers have included popular children's author Michael Rosen and crime writer Sophie Hannah.

Our English Literature students produced an anthology of student work, which was designed and typeset by the students and published by the award winning East Anglian publishing house, Gatehouse Press. The anthology, *'The Other Side'*, features short stories and poems, including those from newly appointed Peterborough Poet Laureate, and University Centre Peterborough graduate, Kat Beeton.

To develop and encourage the next generation, we work closely with primary schools and the Children's University organisation to provide free university activities in STEM related subjects.

At our annual Student Awards ceremony we recognise the hard work and excellence across every single one of our courses and those individuals who have made significant contributions to the student community.

There are many other opportunities for you to use and see the facilities as we encourage the wider community to be involved. We host many subject taster events for sixth form and college students and have even hosted live autopsy events with The VIVIT Experience.

Every year, University Centre Peterborough continues to grow and our Alumni have created an institution that recognises the success and achievement for future students to come.



Recently, our **Business Management and Digital Marketing** students pitched their integrated marketing campaigns to local businesses, including Peterborough City Rowing Club and Peterborough Soup Kitchen. Our Level 5 Digital Marketing and Communications students also worked with local business, Peterborough Rowing Club. They had been asked to come up with innovative ways to raise awareness of the rowing club in the local area and pitched their ideas to them.

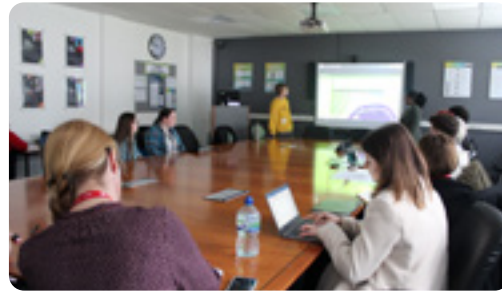


Our first and second-year **Animal Management** students visited the Museum of Zoology, Cambridge and Sedgwick Museum of Earth Sciences. They spent the day working with professionals from each museum, learning about evolution and having a guided tour of the exhibits.



Our **Digital Arts** students spent a semester this year working on an integrated campaign around Giant's women's bike brand, Liv. As part of their Integrated Advertising module, they had to present a live brief, aimed at women aged 18-55, encouraging them to adopt a healthy lifestyle through cycling. Representatives from both Giant and Nene Park Trust were invited into the University Centre to hear the students' pitches and see how they had brought the brief to life. Amongst these was Giant's European Marketing Manager, Collette Clensy, who commented on the work, saying, "The students' commitment to the project shone in their varied creative approaches, demonstrating their teamwork, presentation, marketing and design skills."

Collette continued, "It is inspiring to see the students' motivation and dedication to the assignment goals."



We are also pleased to announce a new partnership with Stamford based writing magazine, MONO. Over the next three years, MONO. will work out of UCP, editing and designing print and digital issues and offering undergraduate students the opportunity to gain valuable work experience skills in publishing. MONO. was launched by **Creative Writing** Alumni, Kayleigh Cutforth in 2020, after being inspired by the employment module in her second year of study. MONO. has steadily gained a readership of over 1k readers as well as recognition amongst fellow indie publishers and authors.



Finally, our award-winning student blog 'Inside The Box' launched its own radio show in March. The new radio show episode is live each Wednesday, and features shows including showbiz, music, film, TV and interviews with local MPs and people of interest. The show is student-led, with a run time of around five hours, and includes input from various college and university students of all interests.

**Make sure you follow our socials to keep up with everything going on at UCP!**



**Brenda was looking for a course that would work around her professional and family life, and felt University Centre Peterborough would be perfect for her. Brenda noted the flexibility of the course as one of her main factors for enrolling; "Full time was 2 days, it wasn't too big of a uni, it provided an intimate feel and was local to where I live. There was enough support and I was provided extra time to hand in dissertations so I could work around my family."**

Now that Brenda has graduated, she has been fortunate to find a job within the industry very quickly after finishing her degree and plans to progress to a Masters. During her time at UCP, Brenda was able to work flexibly, to shape her course around her personal life commitments, and was supported by the University in doing this. Brenda was also pushed out of her comfort zone whilst studying for her course - she remarked about the times she had to present to her peers; "I would consider myself an introvert. I was very nervous when presenting for the first time, however in the final presentation I felt so confident and could really see where I had progressed."

**BRENDA CHISHA-USHEWOKUNZE**  
BSc (Hons) Accounting and Finance



**“The best parts about the course were the opportunity, skills and resources. It helped me further explore my interests, and the knowledge I have gained has allowed me to cultivate my passions and turn them into a meaningful future.”**

Before enrolling at University Centre Peterborough, Declan ran his own business as a health coach. In this role, he would educate clients in exercise, nutrition, life coaching and a range of other specialities; guiding people as they work on improving their mental and physical health. Upon completing his degree, Declan progressed to University of York to study an MSc in Corporate Sustainability and Environmental Management.

**DECLAN JACKSON**  
*BSc (Hons) Business Management*

# OUR COURSE LIST



Browse our list of courses over the next few pages. Visit our website for the most up-to-date information and the full details about each course.

|  |    |
|--|----|
| <b>BUSINESS &amp; PROFESSIONAL COURSES</b> ..... | 40 |
| <b>SOCIAL SCIENCE COURSES</b> .....              | 42 |
| <b>CREATIVE INDUSTRIES COURSES</b> .....         | 46 |
| <b>EDUCATION &amp; TEACHING COURSES</b> .....    | 48 |
| <b>SCIENCE &amp; TECHNOLOGY COURSES</b> .....    | 50 |
| <b>PARTNER COURSES</b> .....                     | 56 |
| <b>ACCESS TO HE COURSES</b> .....                | 57 |
| <b>HTQ COURSES</b> .....                         | 57 |



## Foundation Degree in Business Management

**Entry requirements** 48 UCAS Points in any subjects: A Levels DD, BTEC PPP, Cambridge Technicals PPP, Access to HE 45 credits. You must have GCSE English language and mathematics (or equivalent) at a minimum of grade 4/C.

**Duration** Full-time 2 years (2 full days a week over two semesters per year).

**S** UCAS CODE  
N280  
TUITION P/A  
£8,250 F-T  
£6,188 P-T  
VALIDATED BY  
THE OPEN  
UNIVERSITY



## BSc (Hons) Business Management

**Entry requirements** 72 UCAS Points in any subjects: A Levels CDE or BC, BTEC MMP, Cambridge Technicals MMP, Access to HE 45 credits. You must have GCSE English language and mathematics (or equivalent) at a minimum of grade 4/C. If you have completed the Foundation Degree in Business Management at UCP you can start Level 6 of the BSc (Hons) Business Management to obtain a full honours degree.

**Duration** Full-time 3 years (2 full days a week over two semesters per year). Part-time 4 years (1-2 full days a week over two semesters per year).

**P** UCAS CODE  
N290  
TUITION P/A  
£8,250 F-T  
£6,188 P-T  
VALIDATED BY  
THE OPEN  
UNIVERSITY



## BSc (Hons) Business Management (Human Resources)

**Entry requirements** 72 UCAS Points in any subjects: A Levels CDE or BC, BTEC MMP, Cambridge Technicals MMP, Access to HE 45 credits. You must have GCSE English language and mathematics (or equivalent) at a minimum of grade 4/C. If you have completed the Foundation Degree in Business Management at UCP you can start Level 6 of the BSc (Hons) Business Management to obtain a full honours degree.

**Duration** Full-time 3 years (2 full days a week over two semesters per year). Part-time 4 years (1-2 full days a week over two semesters per year).

**P** UCAS CODE  
N270  
TUITION P/A  
£8,250 F-T  
£6,188 P-T  
VALIDATED BY  
THE OPEN  
UNIVERSITY



## BSc (Hons) Business Management (Marketing)

**Entry requirements** 72 UCAS Points in any subjects: A Levels CDE or BC, BTEC MMP, Cambridge Technicals MMP, Access to HE 45 credits. You must have GCSE English language and mathematics (or equivalent) at a minimum of grade 4/C. If you have completed the Foundation Degree in Business Management at UCP you can start Level 6 of the BSc (Hons) Business Management to obtain a full honours degree.

**Duration** Full-time 3 years (2 full days a week over two semesters per year). Part-time 4 years (1-2 full days a week over two semesters per year).

**P** UCAS CODE  
N260  
TUITION P/A  
£8,250 F-T  
£6,188 P-T  
VALIDATED BY  
THE OPEN  
UNIVERSITY



## BSc (Hons) Business Management (Management Accounting)

**Entry requirements** 72 UCAS Points in any subjects: A Levels CDE or BC, BTEC MMP, Cambridge Technicals MMP, Access to HE 45 credits. You must have GCSE English Language and Mathematics (or equivalent) at a minimum of grade 4/C. If you have completed the Foundation Degree in Business Management at UCP you can start Level 6 of the BSc (Hons) Business Management to obtain a full honours degree.

**Duration** Full-time 3 years (2 full days a week over two semesters per year). Part-time 4 years (1-2 full days a week over two semesters per year).

**P** UCAS CODE  
N230  
TUITION P/A  
£8,250 F-T  
£6,188 P-T  
VALIDATED BY  
THE OPEN  
UNIVERSITY



## Foundation Degree in Digital Marketing and Communications

**Entry requirements** 48 UCAS Points in any subjects: A Levels DD, BTEC PPP, Cambridge Technicals PPP, Access to HE 45 credits. You must have GCSE English Language and Mathematics (or equivalent) at a minimum of grade 4/C.

**Duration** Full-time 2 years (2 full days a week over two semesters per year).

**P** UCAS CODE  
DMC1  
TUITION P/A  
£8,250 F-T  
VALIDATED BY  
THE OPEN  
UNIVERSITY



## BA (Hons) Digital Marketing and Communications

**Entry requirements** 72 UCAS Points in any subjects: A Levels CDE or BC, BTEC MMP, Cambridge Technicals MMP, Access to HE 45 credits. GCSE English Language and Mathematics at a minimum of grade 4/C. If you have completed the Foundation Degree in Digital Marketing and Communications at UCP you can start Level 6 of the BA (Hons) Digital Marketing and Communications to obtain a full honours degree.

**Duration** Full-time 3 years (2 full days a week over two semesters per year). Part-time 4 years (1-2 full days a week over two semesters per year).

**P** UCAS CODE  
DMC2  
TUITION P/A  
£8,250 F-T  
£6,188 P-T  
VALIDATED BY  
THE OPEN  
UNIVERSITY



## BA (Hons) Criminology

**Entry requirements** 88 UCAS points which should be from a related subject in one of the following; A Levels, BTEC Level 3 National Diploma, IB Diploma, Access to HE, related work experience or overseas qualifications judged to be equivalent to above. You must have 5 GCSEs at grade 4/C or above including English and mathematics (or equivalent). Students who do not qualify by any of these qualifications may be offered an interview to discuss equivalent qualifications and previous experience. We accept A level General Studies and AS Levels when combined with other full qualifications. If English is not your first language you will require IELTS score of 6.0 or above or an equivalent English Language qualification.

**Duration** Full-time 3 years (2 full days a week over two semesters per year). Part-time 4 years (1-2 full days a week over two semesters per year).

**S**  
UCAS CODE  
M900  
TUITION P/A  
£8,250 F-T  
£6,188 P-T  
VALIDATED BY  
THE OPEN  
UNIVERSITY

## BA (Hons) English Literature

**Entry requirements** 88 UCAS points which should be from a related subject in one of the following; A Levels, BTEC Level 3 National Diploma, IB Diploma, Access to HE, related work experience or overseas qualifications judged to be equivalent to above. You must have 5 GCSEs at grade 4/C or above including English and mathematics (or equivalent). Students who do not qualify by any of these qualifications may be offered an interview to discuss equivalent qualifications and previous experience. We accept A Level General Studies and AS Levels when combined with other full qualifications. If English is not your first language you will require IELTS score of 6.0 or above or an equivalent English language qualification.

**Duration** Full-time 3 years (2 full days a week over two semesters per year). Part-time 4 years (1-2 full days a week over two semesters per year).

**P**  
UCAS CODE  
Q300  
TUITION P/A  
£8,250 F-T  
£6,188 P-T  
VALIDATED BY  
THE OPEN  
UNIVERSITY

## BA (Hons) English Literature (Creative Writing)

**Entry requirements** 88 UCAS points which should be from a related subject in one of the following; A Levels, BTEC Level 3 National Diploma, IB Diploma, Access to HE, related work experience or overseas qualifications judged to be equivalent to above. You must have 5 GCSEs at grade 4/C or above including English and mathematics (or equivalent). Students who do not qualify by any of these qualifications may be offered an interview to discuss equivalent qualifications and previous experience. We accept A Level General Studies and AS Levels when combined with other full qualifications. If English is not your first language you will require IELTS score of 6.0 or above or an equivalent English language qualification.

**Duration** Full-time 3 years (2 full days a week over two semesters per year). Part-time 4 years (1-2 full days a week over two semesters per year).

**P**  
UCAS CODE  
Q310  
TUITION P/A  
£8,250 F-T  
£6,188 P-T  
VALIDATED BY  
THE OPEN  
UNIVERSITY

## BA (Hons) History and Archaeology

**Entry requirements** 88 UCAS Points with qualifications in related subjects: A Levels CDD or BB, BTEC MMP, Access to HE 45 credits. You must have GCSE English language and mathematics (or equivalent) at a minimum of grade 4/C.

**Duration** Full-time 3 years (2 full days a week over two semesters per year). Part-time 4 years (1-2 full days a week over two semesters per year).

**P**  
UCAS CODE  
V400  
TUITION P/A  
£8,250 F-T  
£6,188 P-T  
VALIDATED BY  
THE OPEN  
UNIVERSITY

## BA (Hons) Psychosocial Studies

**Entry requirements** 88 UCAS points which should be from one of the following; A Levels, BTEC Level 3 National Diploma, IB Diploma, Access to HE, related work experience or overseas qualifications judged to be equivalent to above. You must have GCSE English language and mathematics (or equivalent) at a minimum of grade 4/C. Students who do not qualify by any of these qualifications may be offered an interview to discuss equivalent qualifications and previous experience. We accept A Level General Studies and AS Levels when combined with other full qualifications. If English is not your first language you will require IELTS score of 6.0 or above or an equivalent English language qualification.

**Duration** Full-time 3 years (2 full days a week over two semesters per year). Part-time 4 years (1-2 full days a week over two semesters per year).

**P**  
UCAS CODE  
C880  
TUITION P/A  
£8,250 F-T  
£6,188 P-T  
VALIDATED BY  
THE OPEN  
UNIVERSITY

## BA (Hons) Sociology

**Entry requirements** 88 UCAS points which should be from one of the following; A Levels, BTEC Level 3 National Diploma, IB Diploma, Access to HE, related work experience or overseas qualifications judged to be equivalent to above. You must have GCSE English language and mathematics (or equivalent) at a minimum of grade 4/C. Students who do not qualify by any of these qualifications may be offered an interview to discuss equivalent qualifications and previous experience. We accept A Level General Studies and AS Levels when combined with other full qualifications. If English is not your first language you will require IELTS score of 6.0 or above or an equivalent English language qualification.

**Duration** Full-time 3 years (2 full days a week over two semesters per year). Part-time 4 years (1-2 full days a week over two semesters per year).

**P**  
UCAS CODE  
L300  
TUITION P/A  
£8,250 F-T  
£6,188 P-T  
VALIDATED BY  
THE OPEN  
UNIVERSITY

## Diploma in Therapeutic Counselling

**Entry requirements** Applicants must have a Certificate in Counselling Skills and Theory (Level 3) and the ability to secure 100 hours of counselling practice. You must have GCSE English language and mathematics (or equivalent) at a minimum of grade 4/C. An enhanced DBS check is required.

**Duration** Part-time 2 years (1 full day a week over one year).  
Part-time 2 years (1 afternoon and evening a week on the same day over one year).

*Please note, this course is currently accredited by AIM but we are seeking validation by the Open University.*

S  
UCAS CODE  
N/A  
TUITION P/A  
£5,500 F-T  
ACCREDITED BY  
AIM

## BA (Hons) Therapeutic Counselling and Psychotherapy (Top-Up)

**Entry requirements** Applicants must hold a recognised Diploma in Counselling or equivalent at Level 5. An equivalent would be a counsellor with a Level 4 qualification, experience of at least 2 years counselling and Level 5 qualifications of 120 hours in another relevant subject. This would need to be ascertained as suitable at interview. Applicants should have formal training in counselling and/or psychotherapy. Applicants must meet National Counselling Society (NCS) supervised practice requirements of 100 hours minimum, or equivalent. Applicants must demonstrate current professional registration with a relevant organisation such as the British Association for Counselling and Psychotherapy (BACP), NCS, UKCP or equivalent. All candidates will be required to attend an interview before joining the programme. Interviewers will be seeking evidence of: ability to write and discuss assignments at undergraduate level, recent reading of counselling research literature and reflection on learning experiences from recent and relevant courses. An enhanced DBS check is required. Students for whom English is not their first language will be required to have IELTS English at level 6.0 with no skills below 5.5.

**Duration** Full-time 1 year (1 full day a week over two semesters per year).

S  
UCAS CODE  
PCCP  
TUITION P/A  
£8,250 F-T  
VALIDATED BY  
THE OPEN  
UNIVERSITY



**“When I first decided I wanted to go to university I was a mother of a 1 year old wanting to achieve a better career for myself. I chose University Centre Peterborough because I live locally. UCP courses run over a couple of days, so it is a great choice for individuals who can't travel far away if they have personal responsibilities. Another reason I chose UCP was their excellent success rate of their Alumni.**

**My favourite thing about UCP was the small cohort groups, this meant you could develop close relationships with others on your course which is so beneficial for help, support and advice throughout the degree. The lecturers are extremely helpful with advice and support - they set out lectures with guest speakers from all different kinds of areas to show what opportunities can come next for the students. I am now going to teach Sociology and I feel extremely prepared and confident in my knowledge.”**

Lauren is currently training to be a teacher at Teach East and will go on to teach Sociology.

**LAUREN PARTRIDGE**  
BA (Hons) Sociology



## BA (Hons) Media Production

**Entry requirements** 72 UCAS points in any subjects: A Levels CDE or BC, BTEC MMP, Cambridge Technicals MMP, Access to HE 45 credits. A portfolio and interview may be required before an offer can be made. You must have GCSE English language and mathematics (or equivalent) at a minimum of grade 4/C.

**Duration** Full-time 3 years (2 full days a week over two semesters per year). Part-time 4 years (1-2 full days a week over two semesters per year).

**P** UCAS CODE  
**P300**

TUITION P/A  
**£8,250 F-T**  
**£6,188 P-T**

VALIDATED BY  
**THE OPEN UNIVERSITY**

## BA (Hons) Acting for Stage and Screen

**Entry requirements** 88 UCAS points in any subjects: A Levels, BTEC Level 3 National Diploma, IB Diploma, Access to HE. An audition will be required before an offer can be made. You must have GCSE English language and mathematics (or equivalent) at a minimum of grade 4/C.

**Duration** Full-time 3 years (2 full days a week and 1 day of rehearsal over two semesters per year). Part-time 4 years (1-2 full days a week over two semesters per year).

**P** UCAS CODE  
**7W73**

TUITION P/A  
**£8,250 F-T**  
**£6,188 P-T**

VALIDATED BY  
**THE OPEN UNIVERSITY**

## BA (Hons) Digital Arts

**Entry requirements** 5 GCSEs at grade 4/C or above including English and maths and 88 UCAS points which should be from a related subject in one of the following; A Levels, BTEC Level 3 National Diploma, IB Diploma, Access to HE, related work experience or overseas qualifications judged to be equivalent to the above. Students who do not qualify by any of these qualifications may be offered an interview to discuss equivalent qualifications and previous experience. We accept A Level General Studies and AS Levels when combined with other full qualifications.

**Duration** Full-time 3 years (2 full days a week over two semesters per year). Part-time 4 years (1-2 full days a week over two semesters per year).

**P** UCAS CODE  
**DARB**

TUITION P/A  
**£8,250 F-T**  
**£6,188 P-T**

VALIDATED BY  
**THE OPEN UNIVERSITY**

## BA (Hons) Digital Arts (Graphic Design)

**Entry requirements** 5 GCSEs at grade 4/C or above including English and maths and 88 UCAS points which should be from a related subject in one of the following; A Levels, BTEC Level 3 National Diploma, IB Diploma, Access to HE, related work experience or overseas qualifications judged to be equivalent to the above. Students who do not qualify by any of these qualifications may be offered an interview to discuss equivalent qualifications and previous experience. We accept A Level General Studies and AS Levels when combined with other full qualifications.

**Duration** Full-time 3 years (2 full days a week over two semesters per year).

**S** UCAS CODE  
**DARG**

TUITION P/A  
**£8,250 F-T**

VALIDATED BY  
**THE OPEN UNIVERSITY**

## BA (Hons) Digital Arts (Photography)

**Entry requirements** 5 GCSEs at grade 4/C or above including English and maths and 88 UCAS points which should be from a related subject in one of the following; A Levels, BTEC Level 3 National Diploma, IB Diploma, Access to HE, related work experience or overseas qualifications judged to be equivalent to the above. Students who do not qualify by any of these qualifications may be offered an interview to discuss equivalent qualifications and previous experience. We accept A Level General Studies and AS Levels when combined with other full qualifications.

**Duration** Full-time 3 years (2 full days a week over two semesters per year).

**P** UCAS CODE  
**DARP**

TUITION P/A  
**£8,250 F-T**

VALIDATED BY  
**THE OPEN UNIVERSITY**

## BA (Hons) Journalism

**Entry requirements** 5 GCSEs at grade 4/C or above including English and maths and 88 UCAS points which should be from a related subject in one of the following; A Levels, BTEC Level 3 National Diploma, IB Diploma, Access to HE, related work experience or overseas qualifications judged to be equivalent to the above. Students who do not qualify by any of these qualifications may be offered an interview to discuss equivalent qualifications and previous experience. We accept A Level General Studies and AS Levels when combined with other full qualifications.

**Duration** Full-time 3 years (2 full days a week over two semesters per year). Part-time 4 years (1-2 full days a week over two semesters per year).

**P** UCAS CODE  
**P500**

TUITION P/A  
**£8,250 F-T**  
**£6,188 P-T**

VALIDATED BY  
**THE OPEN UNIVERSITY**

**Annie secured a freelance contract with the BBC, working as a Broadcast Assistant for BBC Radio Cambridgeshire, gaining hands-on experience whilst studying her degree!** Our BA (Hons) Journalism and BA (Hons) Media Production courses will work closely alongside the BBC to provide exciting opportunities for our creative students, including studio tours and industry workshops.

**ANNIE FOWLER**  
*BA (Hons) Journalism*





## Foundation Degree in Early Childhood Studies

**Entry requirements** 48 UCAS points in any subject. A minimum of 400 hours pre-entry work experience working with children aged birth to 11. A confirmed placement in an Early Years setting of a minimum of 40 days per academic year, including identification of a workplace mentor. You must have GCSE English language and mathematics (or equivalent) at a minimum of grade 4/C. Admission to the programme is also possible for mature students without formal qualifications but with equivalent professional experience.

**Duration** Full-time 2 years (1 full day a week over two semesters per year).

P  
S  
UCAS CODE  
LXM1  
TUITION P/A  
£8,250 F-T  
£4,125 P-T  
VALIDATED BY  
THE OPEN  
UNIVERSITY



## Foundation Degree in Primary Education

**Entry requirements** 48 UCAS points in any subject. A minimum of 400 hours pre-entry work experience within an early years or primary education setting. A confirmed placement of a minimum of 40 days per academic year, including identification of a workplace mentor. You must have GCSE English language and mathematics (or equivalent) at a minimum of grade 4/C. Admission to the programme is also possible for mature students without formal qualifications but with equivalent professional experience.

**Duration** Full-time 2 years (1 full day a week over two semesters per year).

P  
S  
UCAS CODE  
LXM2  
TUITION P/A  
£8,250 F-T  
£4,125 P-T  
VALIDATED BY  
THE OPEN  
UNIVERSITY

## BA (Hons) Education Studies (Top-Up)

**Entry requirements** A minimum of 400 hours pre-entry work experience within an education setting. A confirmed placement of a minimum of 40 days per academic year, including identification of a workplace mentor. Successful completion of a 240-credit Level 5 qualification, Foundation Degree or equivalent. You must have GCSE English language and mathematics (or equivalent) at a minimum of grade 4/C. An enhanced DBS check is required. If English is not your first language, an IELTS score of 6.0 or above is required.

**Duration** Full-time 1 year (1 full day a week over two semesters per year). Part-time 2 years (1 half day a week over two semesters per year).

P  
S  
UCAS CODE  
X300  
TUITION P/A  
£8,250 F-T  
£4,125 P-T  
VALIDATED BY  
THE OPEN  
UNIVERSITY

## BA (Hons) Primary Education (Top-Up)

**Entry requirements** A minimum of 400 hours pre-entry work experience within an education setting. A confirmed placement of a minimum of 40 days per academic year, including identification of a workplace mentor. Successful completion of a 240-credit Level 5 qualification, Foundation Degree or equivalent. You must have GCSE English language and mathematics (or equivalent) at a minimum of grade 4/C. An enhanced DBS check is required. If English is not your first language, an IELTS score of 6.0 or above is required.

**Duration** Full-time 1 year (1 full day a week over two semesters per year). Part-time 2 years (1 half day a week over two semesters per year).

P  
S  
UCAS CODE  
X302  
TUITION P/A  
£8,250 F-T  
£4,125 P-T  
VALIDATED BY  
THE OPEN  
UNIVERSITY

## BA (Hons) Early Childhood Studies (Top-Up)

**Entry requirements** A minimum of 400 hours pre-entry work experience within an education setting. A confirmed placement of a minimum of 40 days per academic year, including identification of a workplace mentor. Successful completion of a 240-credit Level 5 qualification, Foundation Degree or equivalent. Admission to the programme is also possible for mature students without formal qualifications but with equivalent professional experience. GCSE English language and mathematics at a minimum of grade 4/C or equivalent. An enhanced DBS check is required. If English is not your first language, an IELTS score of 6.0 or above is required.

**Duration** Full-time 1 year (1 full day a week over two semesters per year). Part-time 2 years (1 half day a week over two semesters per year).

P  
S  
UCAS CODE  
X303  
TUITION P/A  
£8,250 F-T  
£4,125 P-T  
VALIDATED BY  
THE OPEN  
UNIVERSITY



## Professional Graduate Diploma/ Certificate in Education, Training and Skills

**Entry requirements** Access to a minimum of 100 hours teaching over two years with no fewer than 50 hours in one year. For the Certificate, typically you will have a minimum of a Level 3 qualification (e.g. A Level / BTEC) in the subject(s) that you intend to teach. For the Professional Graduate Diploma, typically you must hold a UK first degree. An enhanced DBS check is required. This qualification is awarded by Bishop Grosseteste University and delivered by University Centre Peterborough.

**Duration** Part-time 2 years (1 evening a week over two semesters per year).

S  
UCAS CODE  
N/A  
TUITION P/A  
£3,000 P-T  
VALIDATED BY  
BISHOP  
GROSSETESTE  
UNIVERSITY



## HND Animal Management (Animal Behaviour and Welfare)

**Entry requirements** 64 UCAS points with at least one qualification in an animal or science related subject: A Levels DDE or CC, BTEC MPP, Cambridge Technicals MPP, Access to HE 45 credits. You must have GCSE English language and mathematics (or equivalent) at a minimum of grade 4/C.

**Duration** Full-time 2 years (2 full days a week over two semesters per year). Part-time 4 years 1 full day (a week over two semesters per year).

**S** UCAS CODE  
**D300**

TUITION P/A  
**£7,500 F-T**  
**£3,750 P-T**

VALIDATED BY  
**PEARSON**  
**EDEXCEL**

## BSc (Hons) Animal Management and Welfare (Top-Up)

**Entry requirements** Applicants should hold a relevant Level 5 qualification (240 credits) in an animal-related subject (animal management, welfare, behaviour, conservation), such as a Foundation Degree or Higher National Diploma at Merit grade or above. Applicants will also need a suitable academic reference. You must have GCSE English language and mathematics (or equivalent) at a minimum of grade 4/C.

**Duration** Full-time 1 year (2 full days a week over two semesters). Part-time 2 years (1 full day per week over two semesters per year).

**S** UCAS CODE  
**D302**

TUITION P/A  
**£8,250 F-T**  
**£4,125 P-T**

VALIDATED BY  
**THE OPEN**  
**UNIVERSITY**

## BSc (Hons) Biological Sciences

**Entry requirements** 88 UCAS points with at least one qualification in a science related subject: A Levels CCD or AB, BTEC MMM, Cambridge Technicals MMM, Access to HE 45 credits. You must have GCSE English language, mathematics and a science (or equivalent) at a minimum of grade 4/C. If you have completed the Foundation Degree in Biological Sciences at UCP you can start Level 6 of BSc (Hons) Biological Sciences to obtain a full honours degree.

**Duration** Full-time 3 years (2-3 full days a week over two semesters per year). Part-time 4 years (1-2 full days a week over two semesters per year).

**P** UCAS CODE  
**C467**

TUITION P/A  
**£8,250 F-T**  
**£6,188 P-T**

VALIDATED BY  
**THE OPEN**  
**UNIVERSITY**

## Diploma in Web Application Development

**Entry requirements** You must be aged 19 or over and must complete the 5-step coding challenge set by Code Institute. You will be required to complete an interview to determine suitability and should have a working knowledge of the English language both written and verbal. You will also require access to a computer or laptop and broadband connection.

**Duration** This course is delivered entirely online in 1 year or less.

**O** UCAS CODE  
**N/A**

TUITION P/A  
**£5,421**

VALIDATED BY  
**CODE**  
**INSTITUTE**

## Foundation Degree in Computer Science

**Entry requirements** 48 UCAS points with at least one qualification in a computing related subject: A Levels DD, BTEC PPP, Cambridge Technicals PPP, Access to HE 45 credits. You must have GCSE English language and mathematics (or equivalent) at a minimum of grade 4/C.

**Duration** Full-time 2 years (2 full days a week over two semesters per year).

**S** UCAS CODE  
**GG40**

TUITION P/A  
**£8,250 F-T**

VALIDATED BY  
**THE OPEN**  
**UNIVERSITY**

## BSc (Hons) Computer Science

**Entry requirements** 64 UCAS points with at least one qualification in a computing related subject: A Levels DDE or CC, BTEC MPP, Cambridge Technicals MPP, Access to HE 45 credits. You must have GCSE English language and mathematics (or equivalent) at a minimum of grade 4/C. If you have completed the Foundation Degree in Computer Science at UCP or HND Computing you can start Level 6 of BSc (Hons) Computer Science to obtain a full honours degree.

**Duration** Full-time 3 years (2-3 full days a week over two semesters per year). Part-time 4 years (1-2 full days a week over two semesters per year).

**P** UCAS CODE  
**GGCS**

TUITION P/A  
**£8,250 F-T**  
**£6,188 P-T**

VALIDATED BY  
**THE OPEN**  
**UNIVERSITY**

## BSc (Hons) Computer Science (Software Development)

**Entry requirements** 64 UCAS points with at least one qualification in a computing related subject: A Levels DDE or CC, BTEC MPP, Cambridge Technicals MPP, Access to HE 45 credits. You must have GCSE English language and mathematics (or equivalent) at a minimum of grade 4/C. If you have completed the Foundation Degree in Computer Science at UCP or HND Computing you can start Level 6 of BSc (Hons) Computer Science to obtain a full honours degree.

**Duration** Full-time 3 years (2-3 full days a week over two semesters per year). Part-time 4 years (1-2 full days a week over two semesters per year).

**P** UCAS CODE  
**COMS**

TUITION P/A  
**£8,250 F-T**  
**£6,188 P-T**

VALIDATED BY  
**THE OPEN**  
**UNIVERSITY**

## BSc (Hons) Computer Science (Networking)

**Entry requirements** 64 UCAS points with at least one qualification in a computing related subject: A Levels DDE or CC, BTEC MPP, Cambridge Technicals MPP, Access to HE 45 credits. You must have GCSE English language and mathematics (or equivalent) at a minimum of grade 4/C. If you have completed the Foundation Degree in Computer Science at UCP or HND Computing you can start Level 6 of BSc (Hons) Computer Science to obtain a full honours degree.

**Duration** Full-time 3 years (2-3 full days a week over two semesters per year). Part-time 4 years (1-2 full days a week over two semesters per year).

**P** UCAS CODE  
**COMN**

TUITION P/A  
**£8,250 F-T**  
**£6,188 P-T**

VALIDATED BY  
**THE OPEN**  
**UNIVERSITY**

## BSc (Hons) Computer Science (Cyber Security)

**Entry requirements** 64 UCAS points with at least one qualification in a computing related subject: A Levels DDE or CC, BTEC MPP, Cambridge Technicals MPP, Access to HE 45 credits. You must have GCSE English language and mathematics (or equivalent) at a minimum of grade 4/C. If you have completed the Foundation Degree in Computer Science at UCP or HND Computing at Stamford you can start Level 6 of BSc (Hons) Computer Science to obtain a full honours degree.

**Duration** Full-time 3 years (2-3 full days a week over two semesters per year). Part-time 4 years (1-2 full days a week over two semesters per year).

**P** UCAS CODE  
COMC  
  
TUITION P/A  
£8,250 F-T  
£6,000 P-T  
  
VALIDATED BY  
THE OPEN  
UNIVERSITY

## HNC Construction (Construction Management)

**Entry requirements** 48 UCAS points with qualifications in construction related subjects: A Levels DD (Mathematics and Physics), BTEC PPP, Cambridge Technicals PPP, Access to HE 45 credits. You must have GCSE English language, mathematics and a science (or equivalent) at a minimum of grade 4/C.

**Duration** HNC 2 years (1 full day a week over two semesters per year). HND additional 2 years (1 full day a week over two semesters per year).

**P** UCAS CODE  
N/A  
  
TUITION P/A  
£3,750 P-T  
  
VALIDATED BY  
PEARSON  
EDEXCEL

## HNC Engineering (Electrical and Electronic)

**Entry requirements** 48 UCAS points with qualifications in engineering related subjects: A Levels DD (mathematics and physics), BTEC PPP, Cambridge Technicals PPP, Access to HE 45 credits. You must have GCSE English language, mathematics and a science (or equivalent) at a minimum of grade 4/C.

**Duration** Full-time 1 year (2 full days a week over two semesters per year). Part-time 2 years (1 full day a week over two semesters per year).

**P** UCAS CODE  
N/A  
  
TUITION P/A  
£7,500 F-T  
£3,750 P-T  
  
VALIDATED BY  
PEARSON  
EDEXCEL

## HNC Engineering (Mechanical)

**Entry requirements** 48 UCAS points with qualifications in engineering related subjects: A Levels DD (Mathematics and Physics), BTEC PPP, Cambridge Technicals PPP, Access to HE 45 credits. You must have GCSE English language, mathematics and a science (or equivalent) at a minimum of grade 4/C.

**Duration** Full-time 1 year (2 full days a week over two semesters per year). Part-time 2 years (1 full day a week over two semesters per year).

**P** UCAS CODE  
N/A  
  
TUITION P/A  
£7,500 F-T  
£3,750 P-T  
  
VALIDATED BY  
PEARSON  
EDEXCEL

## HND Engineering (Electrical/Mechanical)

**Entry requirements** A relevant Level 4 qualification (120 credits) in an engineering related subject (electrical and electronic, mechanical or manufacturing), such as a Higher National Certificate at Merit grade or above. Applicants will also need a suitable academic reference. You must have GCSE English language (or equivalent) at a minimum of grade 4/C.

**Duration** Full-time 1 year (2 full days a week over two semesters per year). Part-time 2 years (1 full day a week over two semesters per year).

**P** UCAS CODE  
N/A  
  
TUITION P/A  
£7,500 F-T  
£3,750 P-T  
  
VALIDATED BY  
PEARSON  
EDEXCEL

## Foundation Degree in Forensic Investigation

**Entry requirements** 64 UCAS points in any subjects: A Levels DDE or CC, BTEC MPP, Cambridge Technicals MPP, Access to HE 45 credits. You must have GCSE English language, mathematics and a science (or equivalent) at a minimum of grade 4/C.

**Duration** Full-time 2 years (2 full days a week over two semesters per year).

**P** UCAS CODE  
F411  
  
TUITION P/A  
£8,250 F-T  
  
VALIDATED BY  
THE OPEN  
UNIVERSITY

## BSc (Hons) Forensic Investigation

**Entry requirements** 88 UCAS points in any subjects: A Levels CCD or AB, BTEC MMM, Cambridge Technicals MMM, Access to HE 45 credits. You must have GCSE English language, mathematics and a science (or equivalent) at a minimum of grade 4/C. If you have completed the Foundation Degree in Forensic Investigation at UCP you can start Level 6 of the BSc (Hons) Forensic Investigation to obtain a full honours degree.

**Duration** Full-time 3 years (2 full days a week over two semesters per year). Part-time 4 years (1-2 full days a week over two semesters per year).

**P** UCAS CODE  
5N28  
  
TUITION P/A  
£8,250 F-T  
£6,188 P-T  
  
VALIDATED BY  
THE OPEN  
UNIVERSITY



## BSc (Hons) Sport and Exercise Science

**Entry requirements** 72 UCAS points with at least one qualification in a sport and exercise science related subject: A Levels CDE or BC, BTEC MMP, Cambridge Technicals MMP, Access to HE 45 credits. You must have GCSE English language, mathematics and a science (or equivalent) at a minimum of grade 4/C.

**Duration** Full-time 3 years (2 full days a week over two semesters per year). Part-time 4 years (1-2 full days a week over two semesters per year).

P

UCAS CODE  
N870

TUITION P/A  
£8,250 F-T  
£6,188 P-T

VALIDATED BY  
THE OPEN  
UNIVERSITY

## Foundation Degree in Sport and Exercise Science (Coaching)

**Entry requirements** 72 UCAS points with at least one qualification in a sport and exercise science-related subject: A Levels CDE or BC, BTEC MMP, Cambridge Technicals MMP, Access to HE 45 credits. You must have GCSE English language, mathematics and a science (or equivalent) at a minimum of grade 4/C.

**Duration** Full-time 2 years (2 full days a week over two semesters per year).

S

UCAS CODE  
N872

TUITION P/A  
£8,250 F-T

VALIDATED BY  
THE OPEN  
UNIVERSITY

## BSc (Hons) Sport and Exercise Science (Coaching)

**Entry requirements** 72 UCAS points with at least one qualification in a sport and exercise science related subject: A Levels CDE or BC, BTEC MMP, Cambridge Technicals MMP, Access to HE 45 credits. You must have GCSE English language, mathematics and a science (or equivalent) at a minimum of grade 4/C.

**Duration** Full-time 3 years (2 full days a week over two semesters per year). Part-time 4 years (1-2 full days a week over two semesters per year).

P

UCAS CODE  
N871

TUITION P/A  
£8,250 F-T  
£6,188 P-T

VALIDATED BY  
THE OPEN  
UNIVERSITY

Visit [www.ucp.ac.uk](http://www.ucp.ac.uk) for full course info and to apply



**“The course enabled me to view Sport and Exercise Science from a scientific justification, and understand the mechanics behind each topic area. The course offered a wide range of topics, this enabled me to develop my passion for a particular subject. The friendly environment of a small cohort allowed a stronger relationship between the lecturers and students, inviting a one-to-one experience which benefited my understanding.”**

University Centre Peterborough doesn't only support their students to gain an excellent education, we also make sure they are set up to enter the world of work. Kian is still working towards his dream career, and his journey started on his Sport and Exercise Science course. He aims to join the NHS cardiology department after completing his Masters in Clinical Exercise Physiology at University of Bedford.

**KIAN BROWN**

*BSc (Hons) Sport and Exercise Science*

## HNC/HND Performing Arts (Musical Theatre)

**Entry requirements** 80 UCAS points with prior knowledge and skills in performing arts: A Levels CDD or BB, BTEC MMP, Cambridge Technicals MMP. You must have GCSE English language and mathematics (or equivalent) at a minimum of grade 4/C. A successful audition is required for this programme.

**Duration** Full-time 3 full days a week. HNC is 1 year and HND is 2 years.

**UCAS CODE**  
1A69

**TUITION P/A**  
£7,500 F-T

**VALIDATED BY**  
**PEARSON**  
**EDEXCEL**



### PARTNER COURSE

Visit [www.easternschool.co.uk](http://www.easternschool.co.uk) to find out more!

**Campus Key**  Eastern School of Performing Arts, Stamford



"I'll be a Detective in 2 years after gaining a place on the Accelerated Detective Constable Programme (ADCP) with Cambridgeshire Constabulary. I couldn't have picked a better degree to prepare for the role."

**BETHANY REYNOLDS**  
BSc (Hons) Forensic Investigation

## Access to Higher Education

**UCAS CODE**  
N/A

**TUITION P/A**  
**VARIABLE**

**ACCREDITED BY**  
**CAVA**

**Entry requirements** You must be aged 19 or over and have GCSE English language and mathematics (or equivalent) at a minimum of grade 4/C.

For Access to HE Science and Health a GCSE in a science at a minimum of grade 4/C is also required.

Mature students or students who do not have the above qualifications should contact Peterborough College to discuss equivalent qualifications or relevant work experience.

**Duration** Full-time 1 year (16 hours a week for 38 weeks a year).

Start your HE journey with an Access course which is a full Level 3 qualification and is delivered at Peterborough College. If you complete the course and start a degree, you may be eligible to have your Access to HE course fee waived. UCP actively encourages applications from Access to HE students due to the excellent subject, professional and academic skills the qualification provides.

### Access to HE routes at Peterborough College:

- Access to HE Business
- Access to HE Humanities and Social Sciences
- Access to HE Science and Health

For more information about these specific courses please visit [www.peterborough.ac.uk](http://www.peterborough.ac.uk).

## HTQ Courses

**Coming soon to UCP!**  
**Starting September 2024**

### Coming soon to UCP – new HTQ provision from September 2024

HTQs are an alternative to apprenticeships or degrees. They may suit you if you want a more practical, employer-led study programme.

Approved HTQs are new and existing Level 4 and 5 qualifications approved by the Institute for Apprenticeships and Technical Education.

There are many different types of HTQs, such as:

- Higher National Diplomas
- Higher National Certificates
- Foundation Degrees
- Higher Education Diplomas

At UCP we will be mapping some of our Higher National and Foundation Degree provision to HTQs. We will update you during your application if your qualification has been tracked to an HTQ. All courses that are approved by 2024 will have the HTQ logo on offer paperwork. We are looking to introduce some additional bursaries for students studying an HTQ accredited programme if DfE guidance allows.

Visit [www.ucp.ac.uk](http://www.ucp.ac.uk) for full course info and to apply

# HOW TO APPLY

**Congratulations on choosing a course to study at University Centre Peterborough! Your next step is to make an application. Our Admissions team are on hand to help you through the process.**

## Full-Time Students

All full-time applications must be made to UCAS via [www.ucas.com](http://www.ucas.com). This is where all full-time students applying to university must make their application. The institution code for University Centre Peterborough is **P56** and you will find all course codes on the course pages in this prospectus. The application process is straightforward but it's best to have all the necessary documents and personal statement prepared in advance. Before you apply, please check that you meet the entry requirements which are listed on the course information pages.

## Part-Time Students

All part-time applications can be made directly to University Centre Peterborough. Part-time application forms can be downloaded via our website, located under 'Enrolment' and 'How to Apply'. Before you apply, please check that you meet the entry requirements which are listed on the course information pages. **If you need support, please contact the Admissions Office on 01733 214466 or [admissions@ucp.ac.uk](mailto:admissions@ucp.ac.uk).**

## When to Apply

We advise you make an application for your chosen course as soon as possible to secure your place.



Once we have processed your application, we will update you with an outcome.

- **First UCAS Deadline** Applications for the majority of full-time courses will be made by 31 January 2024 for September 2024 intake. If you have not made your application by this date you can still apply to University Centre Peterborough at any time afterwards.
- **UCAS Extra** If you missed the first UCAS deadline, you can still apply through UCAS Extra. This also gives you the opportunity to add University Centre Peterborough as an additional choice if you have used all five choices and are not holding any offers.
- **UCAS Clearing** Clearing is for those who have not yet applied or students who have waited until they have received their grades. However, you do not need to wait until you receive your grades before applying through Clearing. If you have applied and been accepted at another university, you still have the opportunity to change to study at University Centre Peterborough. If you don't get the grades you expected, don't panic. Just contact us during Clearing and we can usually confirm your place very quickly. We are used to helping students at this time of year.

## Types of Offer

When you make an application, you will receive one of the following offers:

- **Conditional Offer** You will have to meet certain conditions before you start on the course (such as achieving your exams with a certain grade). We will specify these conditions when making you an offer. When you achieve these grades your place will then be confirmed.

- **Unconditional Offer** You already meet the entry requirements for the course (i.e. you have achieved the grades already) and we are happy to offer you a place without conditions.
- **Decline** Unfortunately, we are not able to offer you a place at this time. We will advise you why you were unsuccessful on this occasion and we can give you advice on alternative courses for progression.

## Partner Courses

Applications for Eastern School of Performing Arts (ESPA) should be made via UCAS using the code **1A69**.

## Applicant Day

This invitation only event is available to students who are holding a Conditional Offer or Unconditional Offer. It will give you the opportunity to meet other students, academic staff and participate in subject sessions to help prepare you before starting. If you are still deciding on where to study then this day can be a great chance to see if studying with us is right for you.

## Advice Sessions and Open Events

If you would like help with your application, or have any questions, then book onto one of our regular 'Virtual Advice Sessions' where you can speak to a member of staff. During our Open Events we run a series of talks on a variety of topics including applications and student finance. For dates and times of the latest Advice Sessions and Open Events visit [www.ucp.ac.uk/events](http://www.ucp.ac.uk/events).

## Terms and Conditions

Our Terms and Conditions are available at [www.ucp.ac.uk/supporting-you/ucp-policies/](http://www.ucp.ac.uk/supporting-you/ucp-policies/) and it is important you read this information prior to applying.



# ENTRY REQUIREMENTS

## Entry Requirements

Whilst many students come straight from sixth form or college with traditional qualifications, we also welcome applications from mature students with other qualifications or relevant experience. The entry requirements for all courses are listed on each course page in this prospectus.

## Mature Students

Mature students or students who do not satisfy the published entry criteria should call the Admissions Office on 01733 214466 or email [admissions@ucp.ac.uk](mailto:admissions@ucp.ac.uk) to discuss equivalent qualifications or relevant work experience. It should be noted that admission to some courses is strictly prescribed; our Counselling courses are an example of this.

## UCAS Tariff

If the course requires a specified number of UCAS points you can use the tables opposite as a guide. The tariff points for qualifications can be added and combined together (e.g. A Levels plus BTECs). The UCAS points for A Level General Studies and the EPQ (Extended Project Qualification) are accepted when combined with other full qualifications.

We accept a wide range of qualifications such as A Levels, Technical Qualifications, BTEC, Cambridge Technicals, International Baccalaureate (IB), NVQ Level 3, Access to Higher Education and Scottish Advanced Highers. To find out more about UCAS tariff points and how they work, visit [www.ucas.com/ucas/tariff-calculator](http://www.ucas.com/ucas/tariff-calculator).

We highly recommend that you confirm your achieved (or predicted) tariff points directly through the UCAS Tariff Calculator.

## A Levels

You must have grades for at least two A Levels. Note that some courses may require you to have a related subject at A Level to apply for the course.

## BTEC Nationals / Technical Qualifications

Note that some courses may require you to have a related subject at BTEC to apply for the course.

## Access to HE

We accept Access to HE qualifications for all of our undergraduate courses as we recognise that this course prepares you for studying a degree. For more information about which pathways we offer, please see page 57. It should be noted that admission to some courses is strictly prescribed, our Counselling courses are an example of this.

## GCSEs

You must have GCSE English Language and Mathematics (or equivalent) at a minimum of grade C or grade 4. Some courses will also require you to have GCSE Science.

## English Language

If English is not your first language then you must achieve a recognised Level 2 English language qualification or you will require an IELTS score of 6.0 (with 5.5 minimum in each skill).

## Exemptions Based on Accreditation of Prior Learning (APL)

We offer students flexibility in their studies by recognising learning they may have completed elsewhere before they apply. The Accreditation of Prior Learning process ensures that we can take this into account when determining the modules you must study. It is important that you identify any relevant prior learning when you apply. If your previous study specifically relates to modules on the course you wish to undertake we may approve a reduced programme of study, thus shortening the time it takes to obtain your award. Where this relates to learning completed through an earlier course of study, this is called Prior Certificated Learning, and where learning has been achieved through relevant work or experience, this is referred to as Prior Experiential Learning. Claims must be approved before you commence a course. APL is about credit transfer, not the transfer of grades.

## Accreditation of Prior Certificated Learning (APCL) For Entry

APCL relates to learning completed through an earlier course of study. If you have previously completed a course which is relevant to your proposed course you should make this clear when you apply. For this to be eligible for consideration you must be able to provide certification, which shows your success in a final assessment for that course.

Learning must be completed in the last five years or further evidence of updating will be required. Simple participation in a course or an attendance certificate is not sufficient.

## Exemptions Based on Accreditation of Prior Experiential Certificated Learning (APEL)

It is important to understand that the APEL process does not award academic credit for experience alone, but for learning which can be shown to have been achieved through that experience. Students are required to prepare an individual case for the credit arising from their learning experiences.

This normally means that a student receives support in the preparation of a portfolio, which evidences their claimed exemptions for entry. This portfolio of evidence is then submitted for assessment and the possible award of academic credit. Alternative methods of assessment of evidence may be available but needs to be discussed with the Admissions Office or Course Leader.

## Overseas Qualifications

We can accept a wide range of overseas qualifications and recommend that you submit these qualifications to UK ENIC [www.ecctis.com](http://www.ecctis.com) for a comparison report. For help and advice about conversion call the Admissions Office on 01733 214466 or [admissions@ucp.ac.uk](mailto:admissions@ucp.ac.uk).

## UCAS TARIFF POINTS

| A Levels |    | AS levels |    |
|----------|----|-----------|----|
| A*       | 56 |           |    |
| A        | 48 | A         | 20 |
| B        | 40 | B         | 16 |
| C        | 32 | C         | 12 |

**Key**  
D = Distinction  
M = Merit  
P = Pass

| BTEC National Extended Diploma |     | BTEC National Diploma |     | BTEC National Extended Certificate |    |
|--------------------------------|-----|-----------------------|-----|------------------------------------|----|
| D*D*D*                         | 168 | D*D*                  | 112 | D*                                 | 56 |
| D*D*D                          | 160 | D*D                   | 104 | D                                  | 48 |
| D*DD                           | 152 | DD                    | 96  | M                                  | 32 |
| DDD                            | 144 | DM                    | 80  | P                                  | 16 |
| DDM                            | 128 | MM                    | 64  |                                    |    |
| DMM                            | 112 | MP                    | 48  |                                    |    |
| MMM                            | 96  | PP                    | 32  |                                    |    |
| MMP                            | 80  |                       |     |                                    |    |
| MPP                            | 64  |                       |     |                                    |    |
| PPP                            | 48  |                       |     |                                    |    |
| P                              | 16  |                       |     |                                    |    |

If you have any questions about entry requirements contact the Admissions Office on 01733 214466 or email [admissions@ucp.ac.uk](mailto:admissions@ucp.ac.uk).

# FEES AND FUNDING



The costs of studying can be an important factor in choosing where to study. We offer lower tuition fees compared to many other universities and bursary schemes for undergraduate students.

## Tuition Fees

The tuition fees for UK full-time undergraduate students starting in the 2024/25 academic year will be £8,250 per year. This is lower compared to many other universities. Fees for part-time study are pro rata depending on the number of credits you are studying (i.e. 90 credits per year is 75% of the tuition fee). A HNC/HND will be £7,500 per year full-time and £3,750 per year part-time.

- All tuition fees may be subject to an annual inflationary increase.
- Please note that if you fail a unit, you may incur re-sit costs.
- There may be additional costs for the course which are not covered by your tuition fee (e.g. course trips, travel costs).

- For more details you can refer to the course information section on our website.

## Paying for Your Degree

You can apply for student finance to cover your tuition fees and living expenses. Student finance is broken into two separate loans; tuition fee loan and a maintenance loan.

If you do not wish to take a tuition fee loan and prefer to pay fees upfront or you are being sponsored by an employer, please email [studentfinance@ucp.ac.uk](mailto:studentfinance@ucp.ac.uk) for payment details. Fees and payment terms and conditions are available on our website.



## Student Finance Tuition Fee

You can apply for a tuition fee loan to cover the full cost of the tuition fees. Tuition fees are not means-tested so your household income does not affect your entitlement and you will be entitled to the full amount. The Student Loans Company pay the fees directly to University Centre Peterborough and you do not need to pay any fees upfront.

## Student Finance Maintenance Loan

Full-time and part-time students can apply for a maintenance loan to help with living costs such as accommodation, food, bills, transport, study resources and books. The Student Loans Company will pay the maintenance loan directly into your bank account over three instalments. The amount of maintenance loan you are entitled to will depend on your personal circumstances, including your household income, your age, what year of study you are in, and whether you are living at home or away from home. These levels are determined by government and not set by UCP. The figures displayed are from academic year 2022/2023 and are to give you an indication of what you could get for a maintenance loan. There is also a calculator on the student finance website: [www.gov.uk/student-finance-calculator](http://www.gov.uk/student-finance-calculator).

## Further Information

For more information about tuition fees and maintenance loans including how much you may be entitled to, visit [www.gov.uk/student-finance](http://www.gov.uk/student-finance). You can easily check what you are entitled to without starting an application. For more help and FAQs please see [www.studentfinance.campaign.gov.uk](http://www.studentfinance.campaign.gov.uk)

| Household income | Living away from home | Living at home |
|------------------|-----------------------|----------------|
| up to £25,000    | £9,706/yr             | £8,171/yr      |
| £35,000          | £8,318/yr             | £6,796/yr      |
| £45,000          | £6,929/yr             | £5,420/yr      |
| £55,000          | £5,540/yr             | £4,045/yr      |
| £58,253          | £5,088/yr             | £3,579/yr      |
| £62,311          | £4,524/yr             | £3,597/yr      |

## Applying for Student Finance

The easiest way to apply for student finance is online at [www.gov.uk/student-finance](http://www.gov.uk/student-finance). You can start your application from the end of February 2024. It can take a minimum of six to eight weeks to process your application, so you should apply for student finance as soon as possible. When you apply for student finance funding, please use institution code **FFCH** and institution name University Centre Peterborough.

## Repaying Your Student Finance

Both your tuition fee loan and your maintenance loan are combined together to make your student loan. As your course started on or after 1 August 2023 you will be on Plan 5 for repayments. The earliest you will start repaying your loan is the April after you leave your course.

Once it is after this point you will only then make repayments when your income is above £25,000 a year, or £480 a week, or £2,083 a month (before tax and other deductions). When you start repaying this is done automatically on your pay slip in the same way that tax is deducted from your earnings. The amount you repay is 9% of your income which is over the threshold. For example, if you have an income of £30,000 a year. Which is £2,500 a month.

This is your income minus the threshold:  
 $£2,500 - £2,083 = £417$ .

9% of your income over the threshold:  
 $9\% \text{ of } £417 = £37.53$

So, you would repay £37.53 a month if you were earning £30,000

What happens if you don't repay it? Nothing. Your loan will be written off 40 years after the April you were first due to repay. The loan also will not affect your credit score at all.

### EU Students

If you are from an EU country you may be able to get a tuition fee loan and help with living costs. EU students will have continued access to student finance for the duration of the course if they start in the 2024/25 academic year.

EU students must provide evidence of their Settled or Pre-Settled status when applying for a course. For the latest information, we advise EU students to check [gov.uk/student-finance/eu-students](https://gov.uk/student-finance/eu-students) or you can speak to our Student Support team for guidance. University Centre Peterborough does not accept international students.

### Disabled Students Allowance

On your UCAS application, when entering your personal details, you will be asked if you have a disability/special need (which could include a long-term health condition, mental health condition or specific learning difficulty). Please ensure you state this on your application as it will not affect your application to study with us, but ensures that we put into place the support you require and there may be funding available to ensure this happens.

### Help for Parents

The Childcare Grant and Parents' Learning Allowance can help parents to balance the cost of childcare and study. Students with an adult who depends on them financially may also be eligible for an Adult Dependents' Grant. Our Student Support team can help advise you on an individual basis so you receive what you are entitled to.

### UCP Low-Income Bursary

If you are from a low-income household (under £25,000 per year) and studying full-time you will receive a £500 cash bursary after the end of the first semester for each academic year. The UCP low income bursary does not need to be repaid after graduating and is not added to your student loan. Part-time students will receive a pro-rata payment depending on the number of credits you are studying. You must be in receipt of tuition fee funding from Student Finance England to be entitled to the Low-Income Bursary.

### Care Leaver Bursary

The Care Leaver Bursary is to enable students who live in or have lived in care to pursue their studies at UCP. If you are a Care Leaver and studying a full-time undergraduate course you will receive a £500 cash bursary for each academic year. The Care Leaver Bursary does not need to be repaid after graduating and is not added to your student loan. There is no separate application to be assessed if eligible for the Care Leaver Bursary. All students will be considered for the bursary based on the information supplied in their course application. Applicants will additionally be required to submit evidence of Care Leaver status.

### IEG Progression Bursary

If you are an existing Level 3 College student from Stamford or Peterborough College you can apply for the IEG Progression Bursary. This means you will be awarded £500 at the end of your first year. This is a Bursary so does not add onto your student loan and does not need paying back.

### Malcolm Bradbury Trust Scholarship

A bursary in memory of the late author, screenwriter and academic, the Malcolm Bradbury Trust Scholarship is a registered charity seeking to advance and promote the literary arts through educational initiatives. The Trust aims to support and fund educational opportunities for new writers and creatives, meanwhile expanding the reach of their support to a diverse cohort of students and young people across the UK. This funding of up to £7,500 will support a creative writing undergraduate each year, and they will undertake extra-curricular work to promote literacy and literary engagement in Peterborough.





# KEEP IN TOUCH



Follow our socials to keep up with everything going on at UCP. Have a question for us? Give us a call, send us an email or visit our website to Live Chat with our friendly team.



## Open Events

Our Open Events are a great way to get a snapshot of what university life is like here at UCP and provide you with all the information you need to help you make the right decision for your future.

On the day you will be able to have a look around and speak to staff about applications and courses. We will have various displays and demonstrations for our courses and current students will also be on hand to tell you about studying at UCP.

In addition to our course advice we will also have financial talks, information on our clubs, societies and student accommodation.

Register your place at [www.ucp.ac.uk](http://www.ucp.ac.uk).

## Explore Our Campus Any Time!

Can't make it to an Open Event or missed something you wanted to see? Contact us to book a tour any time Monday to Friday, or check out our virtual tour at any time on our website. Visit [www.ucp.ac.uk](http://www.ucp.ac.uk) to explore our amazing facilities.



## Open Events 2023/24



|                     |                     |                     |                     |
|---------------------|---------------------|---------------------|---------------------|
| <b>12</b><br>OCT 23 | <b>14</b><br>NOV 23 | <b>23</b><br>MAR 24 | <b>27</b><br>JUN 24 |
|---------------------|---------------------|---------------------|---------------------|



# University Centre **Peterborough**

## ***Peterborough Campus***

University Centre Peterborough  
Park Crescent Campus  
Peterborough  
Cambridgeshire  
PE1 4DZ

## ***Stamford Campus***

University Centre Peterborough  
Drift Road  
Stamford  
PE9 1XA

[www.ucp.ac.uk](http://www.ucp.ac.uk)  
[hello@ucp.ac.uk](mailto:hello@ucp.ac.uk)  
01733 214466



**Inspire**  
Education Group

*Every effort has been made to ensure information is correct at time of print but could be subject to change at any time. This prospectus is available in alternative formats upon request, including large-format, audio and Braille. Whilst rare, if we are unable to progress a course for any reason e.g. insufficient demand, we will work with parents and applicants to find an alternative solution.*